

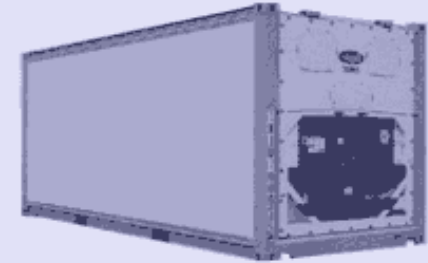
## Ocean Containers Specs

## Containers Specifications

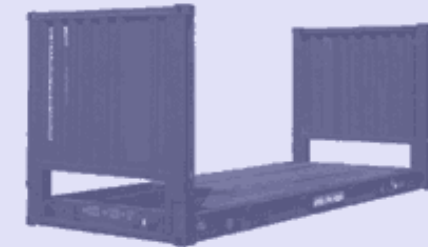
SPECS	Inside Length	Inside Width	Inside Height	Door Width	Door Height	Cubic Capacity	Tare Weight	Maximum Payload
<b>STANDARD CONTAINERS</b>								
<b>20' Standard</b>	19'4"	7'8"	7'10"	7'8"	7'6"	1,172 cft	4,916 lbs	47,900 lbs
	5.900 m	2.350 m	2.393 m	2.342 m	2.280 m	33.2 cbm	2,230 kg	21,770 kg
<b>40' Standard</b>	39'5"	7'8"	7'10"	7'8"	7'6"	2,390 cft	8,160 lbs	59,040 lbs
	12.036 m	2.350 m	2.392 m	2.340 m	2.280 m	67.7 cbm	3,700 kg	26,780 kg
<b>40' H.C.(High Cube)</b>	39'5"	7'8"	8'10"	7'8"	8'5"	2,694 cft	8,750 lbs	58,450 lbs
	12.036 m	2.350 m	2.697 m	2.338 m	2.585 m	76.3 cbm	3,970 kg	26,510 kg
<b>OPEN TOP CONTAINERS</b>								
<b>20' Open Top</b>	19'4"	7'7"	7'8"	7'6"	7'2"	1,136 cft	5,280 lbs	47,620 lbs
	5.894 m	2.311 m	2.354 m	2.286 m	2.184 m	32.2 cbm	2,400 kg	21,600 kg
<b>40' Open Top</b>	39'5"	7'8"	7'8"	7'8"	7'5"	2,350 cft	8,490 lbs	58,710 lbs
	12.038 m	2.350 m	2.345 m	2.341 m	2.274 m	65.5 cbm	3,850 kg	26,630 kg
<b>REEFER CONTAINERS</b>								
<b>20' Reefer</b>	17'8"	7'5"	7'5"	7'5"	7'3"	1,000 cft	7,040 lbs	45,760 lbs
	5.425 m	2.275 m	2.260 m	2.258 m	2.216 m	28.3 cbm	3,200 kg	20,800 kg
<b>40' Reefer</b>	37'8"	7'5"	7'2"	7'5"	7'0"	2,040 cft	10,780 lbs	56,276 lbs
	11.493 m	2.270 m	2.197 m	2.282 m	2.155 m	57.8 cbm	4,900 kg	25,580 kg
<b>40' H.C.Reefer</b>	37'11"	7'6"	8'2"	7'6"	8'0"	2,344 cft	9,900 lbs	57,561 lbs
	11.557 m	2.294 m	2.500 m	2.294 m	2.440 m	66.6 cbm	4,500 kg	25,980 kg
<b>FLAT RACK CONTAINERS</b>								
<b>20' Flat Rack</b>	18'5"	7'3"	7'4"	-	-	-	5,578 lbs	47,333 lbs
	5.620 m	2.200 m	2.233 m	-	-	-	2,530 kg	21,470 kg
<b>40' Flat Rack</b>	39'7"	6'10"	6'5"	-	-	-	12,081 lbs	85,800 lbs
	12.080 m	2.438 m	2.103 m	-	-	-	5,800 kg	39,000 kg



**Dry Containers**



**Refrigerated Containers**



**High Cube Containers**